

# MALBEC 2

2703 James Mowatt Trail SW, Edmonton, AB

## Suite Details:

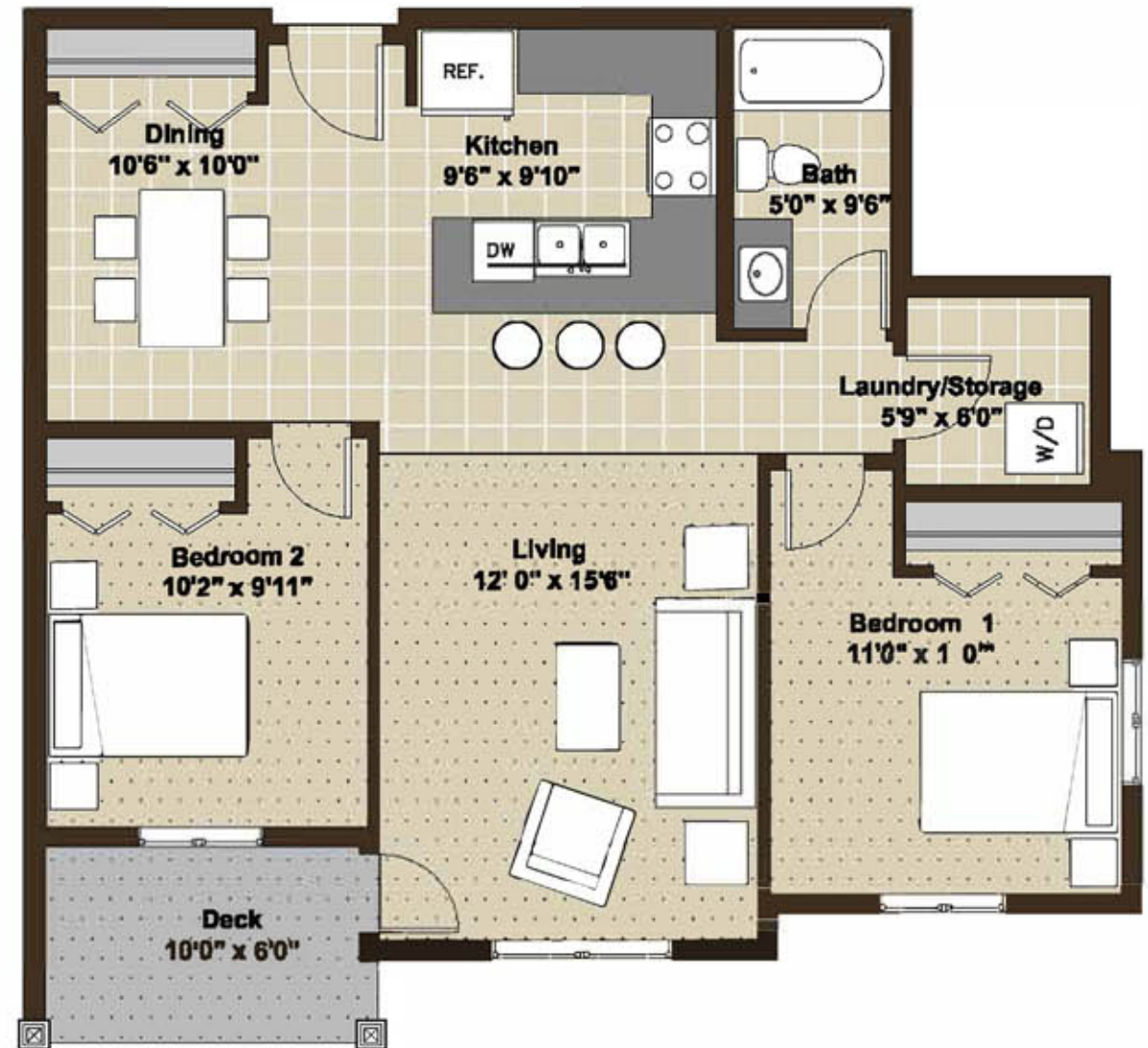
- Condo style suites
- Washer/Dryer in suite
- Heat & water included in rent
- 5 appliances
- Private, large deck or patio for every suite
- Powered parking
- Window coverings included

## Building Details:

- Designed to be the premier rental building in Edmonton
- Upgraded wall and ceiling soundproofing
- Hardiplank exterior & extensive landscaping
- Elevator & secure building access
- Modern finishings

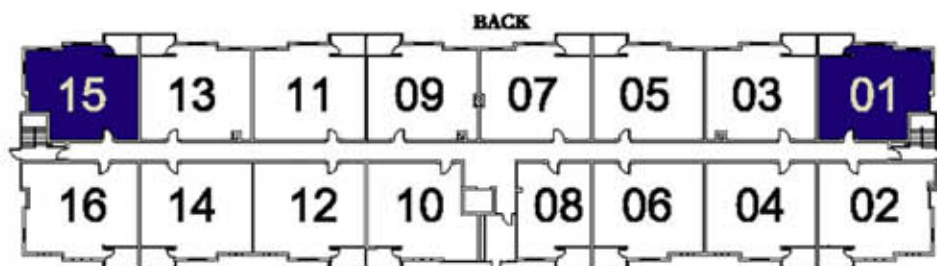


# HERITAGE VALLEY APARTMENTS



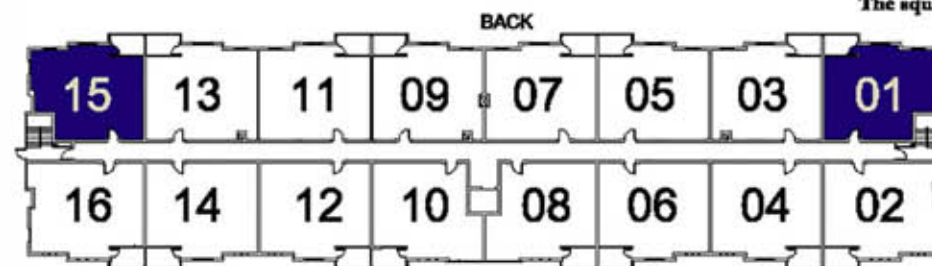
**TWO BEDROOM RESIDENCE 845 SQ.FT**

The square footage and room sizes are approximate.



Building C  
Main Floor

FRONT



Building C  
2nd, 3rd, 4th Floors

FRONT



# MALBEC 2

2715 James Mowatt Trail SW, Edmonton, AB

## Suite Details:

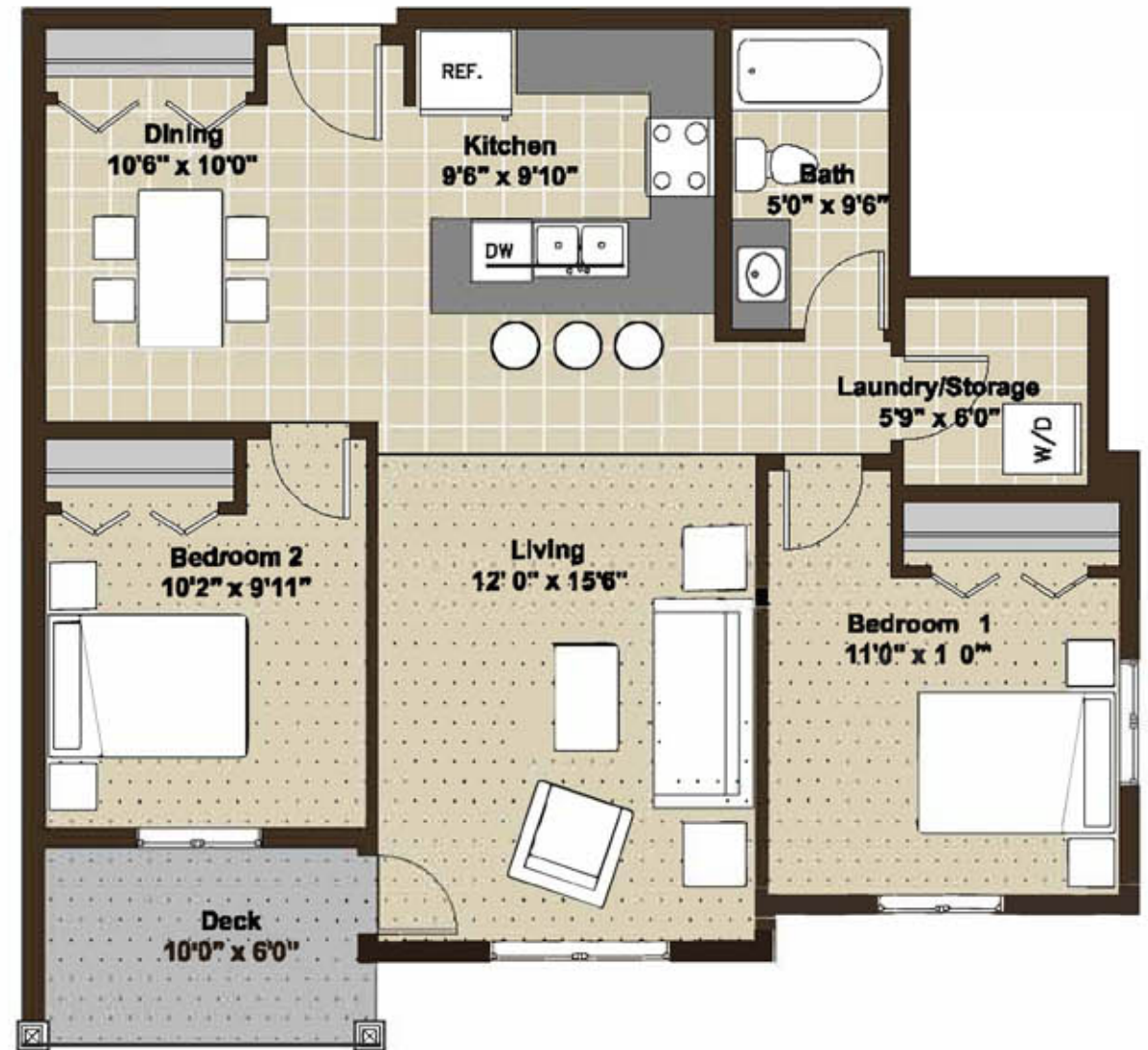
- Condo style suites
- Washer/Dryer in suite
- Heat & water included in rent
- 5 appliances
- Private, large deck or patio for every suite
- Powered parking
- Window coverings included

## Building Details:

- Designed to be the premier rental building in Edmonton
- Upgraded wall and ceiling soundproofing
- Hardiplank exterior & extensive landscaping
- Elevator & secure building access
- Modern finishings

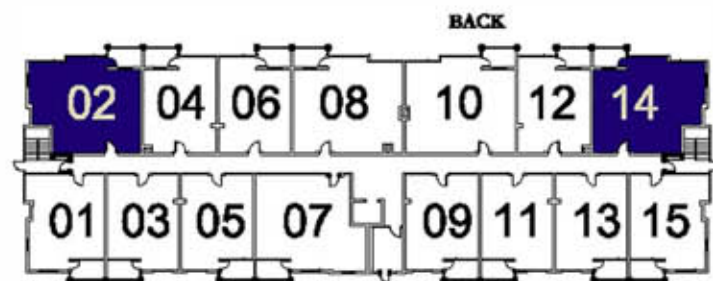


# HERITAGE VALLEY APARTMENTS

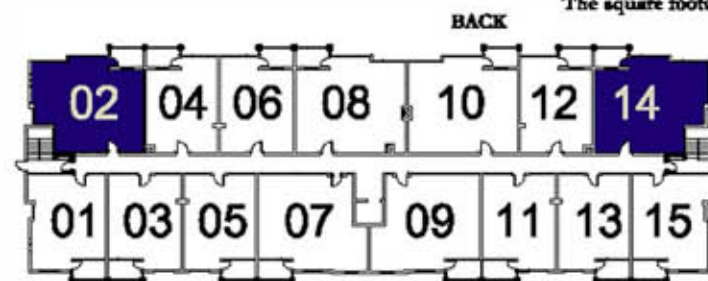


**TWO BEDROOM RESIDENCE 845 SQ.FT**

The square footage and room sizes are approximate.



Building B  
Main Floor



Building B  
2nd, 3rd, 4th Floors